



TRCEOP024

Pipeline Safety Information

for Emergency and Public Officials



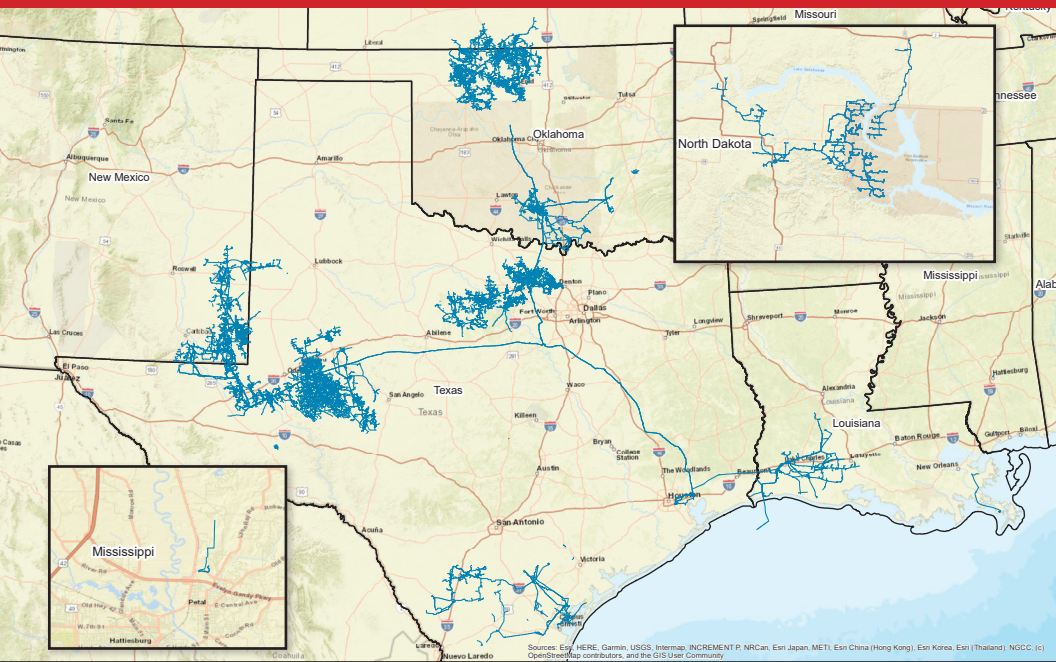
TARGA

Emergency Numbers

LA/TX/NM/OK –
LIQUID
1-800-483-9568
LA – GAS
1-877-897-6501

NORTH TEXAS
1-940-644-2233 (Call collect)
OK/KS/WEST TX/SOUTH TX/
ND/NM – GAS
1-800-722-7098

MS – LIQUID
601-544-5051
NORTH DAKOTA –
LIQUID
1-866-957-3133



About Targa Resources

Targa is a leading provider of midstream services and is one of the largest independent midstream energy companies in North America. We own and operate a diversified portfolio of complementary midstream energy assets. Targa's assets are positioned in some of the most active and established U.S. basins. We own or operate over 33,900 miles of natural gas, NGL and crude oil pipelines ranging in diameter from 2" to 36", as well as other various types of facilities including, but not limited to gas plants, compressor stations, and pump stations. Targa's pipelines are located in the states of Kansas, Louisiana, Mississippi, New Mexico, North Dakota, Oklahoma, and Texas.

You are receiving this brochure because we have identified you as an emergency or public official with responsibilities near Targa Resources pipelines.

You can help us maintain a safe, secure, and reliable pipeline system. If you observe any unusual or suspicious activity near our pipeline facilities, please call Targa Resources emergency number listed on the front cover.

Living and Working Safely Around Targa Resources Pipelines

Using the information contained in this brochure as part of your digging projects will keep you and your community safe.

- Non-emergency phone number: **713-584-1000**
- For more information about pipeline safety visit: **www.targaresources.com**
- Find emergency contact information on the front cover or at: **www.targaresources.com/contact/emergencies**
- To request more information regarding Targa's pipelines in your area, email Targa at: **public-awareness@targaresources.com**



Pipeline Purpose and Reliability

The United States has the largest pipeline network in the world. Data collected by the U.S. Department of Transportation reports pipelines are the safest way to move energy resources like the crude oil, natural gas and other petroleum products Targa Resources transports. We are committed to the safe and reliable operation of our pipelines in your community. Every year our company invests in the latest technology and training to meet the high environmental and safety standards expected by those who live and work near our pipelines.

Emergency Preparedness

We maintain close relationships with local emergency response officials and provide them with detailed information about responding to a natural gas or liquids related incident. The information that we provide includes our first priority of public safety, emergency contact information, how to access our Emergency Response Plans, and the availability of emergency drills and exercises. Our partnerships help prevent incidents and keep us constantly prepared to respond immediately and effectively in the unlikely event of an emergency.

To request more information regarding Targa's Emergency Response Plan, email Targa at public-awareness@targaresources.com.



Pipeline Location Information

Most natural gas pipelines are buried out of sight, but they should never be out of mind. Pipeline signs, as shown, are placed where pipelines intersect public roads, river crossings, and railways. They explain what the pipeline carries and provide the pipeline operator's name and phone number in case of an emergency.



Examples of pipeline markers

Pipeline signs do not indicate the exact location or depth of the pipeline and may not be present in certain areas. Always call 811, even when you're digging by a marked pipeline.

Maintaining Safety and Integrity of Pipelines

Targa Resources monitors the operation of our pipeline system 24 hours a day, 7 days a week. Routine inspections, computer monitoring systems, corrosion protection, maintenance, and regular employee training events are just a few of the ways we ensure the safe and reliable operations of our pipeline. Our pipelines are designed, tested, installed, operated, and maintained in accordance with all applicable federal and state requirements.

For more specific information about the potential hazards and prevention measures, email Targa at public-awareness@targaresources.com.

The chart on the next page, provides general information about products transported through Targa Resources pipelines. For more information, please see the Pipeline and Hazardous Material Safety Administration's "Emergency Response Guidebook." Request a free copy or download the mobile app at: www.phmsa.dot.gov/hazmat/erg/emergency-response-guidebook-erg

Potential Hazards of a Pipeline Release

To protect the pipelines and communities we serve, we perform employee training, regular maintenance and testing, corrosion protection, and inspections to check for leaks and damage.

Below is a list of products transported by Targa Resources.

Product	Leak Type	Vapors	Health Hazards	Fire Hazards
Natural Gas	Gas	Lighter than air	Extremely high concentration may cause irritation or asphyxiation	Extremely flammable and easily ignited by heat, sparks, or flames
Hazardous liquids (Such as: Condensate, Crude Oil, Diesel Fuel, Jet Fuel, Gasoline and Other Refined Products)	Liquid	Initially heavier than air and spread along ground and collect in low or confined areas	Inhalation or contact with material may irritate or burn skin and eyes. Fire may produce irritating, corrosive and/or toxic gases. Vapors may cause dizziness or suffocation. Runoff from fire control or diluted water may cause pollution.	Vapors may travel to sources of ignition and flash back. Explosion hazards indoors, outdoors or sewers.
Highly Volatile Liquids (HVLs) = Natural Gas Liquids, Liquid Petroleum Gases, Propane, Ethane, Butane, etc.	Liquid/Gas	Heavier than air	Respiratory tract irritant; may cause central nervous system effects, drowsiness, asphyxiation. Both an irritant and a chemical asphyxiate with effects on both oxygen utilization and the central nervous system.	Extremely flammable liquid or vapor, vapors are heavier than air and may accumulate in low areas and travel considerable distance to ignition source.
H ₂ S (Hydrogen Sulfide)	Gas	Heavier than air	High concentration can cause shock, convulsions, inability to breathe, extremely rapid unconsciousness. H ₂ S causes a foul odor in small concentrations but paralyzes the sense of smell in higher concentrations.	Extremely flammable, gas/air mixtures can be explosive, and may travel considerable distance to ignition source and flash back.

One-Call Requirements – CALL BEFORE YOU DIG

State law requires you to notify 811 BEFORE YOU DIG. This is a **FREE** service to you. For general 811 notification information, visit <https://call811.com>.



SAFETY IS IN YOUR HANDS.
EVERY DIG, EVERY TIME.

Steps you must take:

1. **Call 811**; the One-Call operator will want to know where your activity will occur and what type of activity you will be doing.
2. **Wait** until all buried utilities and pipelines are marked with paint and/or flags.
3. **Dig and excavate safely.** Any excavation outside the initially planned area will require a separate notification to 811.

Visit <https://call811.com/811-In-Your-State> and select your state to see state specific one-call rules.

More Information for Emergency Response Officials

As an emergency response official, know we're your partner in maintaining safety and responding to a pipeline incident in the unlikely event one should occur. Our first priority is to protect life; second, to protect property; and third, to maintain service. One way we support safety is to inform you of natural gas pipelines we own or operate in your jurisdiction.

Some Key Steps for Emergency Responders:

1. Assess the situation.
2. Isolate and secure the area (protect the public).
3. Contact the pipeline operator.
4. Work in partnership with the pipeline operator.

When responding to a natural gas pipeline emergency, always make sure your dispatcher has called our emergency number.

More Information for Public Officials

As a public official, you serve a critical role in helping to prevent pipeline incidents. It is imperative that you take every opportunity to promote Call Before You Dig. Prevent a potential disaster by stopping anyone from digging on unmarked land, and make sure that law enforcement and emergency response personnel are aware of the Call Before You Dig law and remain vigilant.

You can help us maintain a safe, secure, and reliable pipeline system. If you observe any unusual or suspicious activity near our pipeline facilities, please call Targa Resources emergency number immediately.

In addition, PIPA (Pipelines and Informed Planning Alliance) has implemented a set of recommended practices related to risk-informed land use near transmission pipelines with the goal of reducing risks and improving the safety of affected communities and transmission pipelines. The initial PIPA effort has resulted in recommended practices for local governments, property developers and owners, transmission pipeline operators, and real estate boards to be aware of and to implement as appropriate. The most recent report can be found here: <https://primis.phmsa.dot.gov/comm/publications/PIPA/PIPA-Report-Final-20101117.pdf#pagemode=bookmarks>

The Right-of-Way

In your role as a public official, we need your help to protect the rights-of-way that all utilities are granted by agreement with local officials. These rights-of-way provide utilities with access to work on their lines so they can respond effectively to emergencies.



Please help us to maintain the rights-of-way by informing the public of right-of-way rules and limitations and ensuring that rights-of-way are kept clear of obstructions such as trees, shrubs, overgrowth, buildings, fences, structures, or any other encroachments that might interfere with access to the pipeline. Encroachments on the right-of-way inhibit the company's ability to reduce third party damages, provide right-of-way surveillance, and perform routine maintenance and required federal/state inspections. Maintaining a pipeline right-of-way free of encroachments is an essential element of maintaining pipeline integrity and safety.

Decisions public officials make about public or private use of land along the right-of-way can impact public safety. Pipeline incidents present risks that may impact public welfare, property, the environment, and local economy far beyond the edges of the right-of-way. Contact us with any questions about the right-of-way or if you plan to dig or build where the right-of-way could be involved.

Special Emergency Procedures if Sour Gas is Present

Risks increase significantly with a sour gas pipeline leak. Hydrogen sulfide (H₂S), also known as sour gas, is extremely toxic. Characteristics of H₂S can be found on page 5 of this brochure, along with a description of health and fire hazards. Below is a summary of the special emergency procedures that Targa will follow if sour gas is present.

Upon receipt of a release report from a public safety official, member of the public, or company employee, the company employee receiving the call will immediately contact the highest-ranking Company Incident Commander present on site. In their absence, the person taking the call will function as the Company Incident Commander. The Company Incident Commander will then:

1. Dispatch company first responders to evaluate the release and establish the limits of the hot zone.
2. Make or direct the making of appropriate contacts with government agencies by calling the local **911** number and the state agency that has jurisdiction over the pipeline.
3. Contact or direct the contact of additional company personnel to serve as additional first responders.
4. Contact the Area Manager.
5. Select staging areas for responders according to the leak site and weather conditions.
6. Coordinate communication with public safety personnel.
7. Make the decision for any evacuation.
8. Determine if any of the general public is in immediate danger and ensure that they are secure.
9. If a decision is made to evacuate, contact members of the general public in the selected area and provide assistance in the evacuation.

These emergency procedures will be activated immediately upon the knowledge that a potentially hazardous volume of hydrogen sulfide gas has been released. The plan will go into effect whether knowledge of the gas escape comes by direct detection, or employee or public notification.

Emergency Numbers

LA/TX/NM/OK – LIQUID: 1-800-483-9568

LA – GAS: 1-877-897-6501

NORTH TEXAS: 1-940-644-2233 (Call collect)

OK/KS/WEST TX/SOUTH TX/ND/NM – GAS:

1-800-722-7098

MS – LIQUID: 601-544-5051

NORTH DAKOTA – LIQUID: 1-866-957-3133



**Tell us how
we are doing**

Scan the QR code to take our survey

- For a list of gas transmission, hazardous liquid, LNG plant, and/or breakout tank operators in your area, visit: www.npms.phmsa.dot.gov
- For information about excavation practices near pipelines, visit: www.commongroundalliance.com
- For more information about pipeline assets in your community, visit our website at: www.targaresources.com
- To access this brochure and/or emergency contact info online, visit: www.targaresources.com/contact/emergencies
- To access PIPAs recommended practices visit: <https://primis.phmsa.dot.gov/comm/publications/PIPA/PIPA-Report-Final-20101117.pdf#page=bookmarks>

Presort Std
U.S. Postage
PAID
Wichita, Ks
Permit No. 504



TARGA

PO Box 3151
Wichita, KS 67201-3151